

NEWPORT COUNTY



THE AMBER NOTE **1981-82** — Official Match Magazine — PRICE 30p



IN THE VISITORS' DRESSING-ROOM . . .

Swindon Town

Football League, Division Three

Tuesday, 18th May, 1982 — k.o. 7.30 p.m.

In This Issue:

- *The day we included eight new Signings against Swindon / Third Division review / Chairman's Thoughts / Inside Somerton/When? Where? Who?*



NEWPORT COUNTY A.F.C.

SOMERTON PARK,
NEWPORT, GWENT

Tel. (0633)
General Enquiries 277543
Commercial Dept. 277472

President

- SYD JENKINS

Directors

- R.A. FORD
(Chairman)
- G.C. THORNECROFT
F.C.C.A., A.T.I.I. (Vice-Chairman)
- A.O. MENZIES
- J.A.P. FORD

Manager

- COLIN ADDISON

Secretary

- PHILIP DAUNCEY

Commercial Manager

- DENNIS SMITH

Trainer/Coach

- DAVID WILLIAMS

Youth Development Officer

- GRAHAM REYNOLDS

Youth Coach

- BRIAN CLARK

Medical Officers

- D.T. HEFFERNAN M.B., B.Ch.
- D.G. JONES M.B., B.Ch.

Administrative Consultant

- KEITH SAUNDERS

Club Chaplain

- Rev. Canon KEITH TYTE

Amber Note Production

Editorial: RICHARD SHEPHERD
Illustration: COLIN DOWD
Design: A.R. DOE ADVERTISING
Print: CENTRAL PRESS (NEWPORT) LTD.

Match Announcers
TIM THRAVES
JANET THRAVES



Colin Addison

We've Deserved
To Reach Safety . . .

WE'VE done it again – last Saturday's narrow win over Huddersfield ensured Third Division safety for us and like yourselves, everyone at this Club is naturally very pleased. We're not hiding the fact that it's been a disappointing season for us but I've always felt that the side has been good enough to stay in this Division and though there have been one or two disappointing moments since I took over I'm pleased with the squad's level of consistency over the last two months – fifteen games have brought us five wins, seven draws and just three defeats – and that is certainly not relegation form.

We know what our failings have been this season – not enough goals scored, especially when we have dominated games. That was illustrated on Saturday against Huddersfield in a match which we did well to win. We could so easily have been 3–0 up at half-time and being a match which we were anxious to win to avoid having to go into tonight's fixture needing a victory to be certain, it was natural that a little tension should creep in last Saturday. We talked about it at half-time and settled things down and that early second-half goal from Steve Lowndes was obviously a great help. I was pleased to see Steve get that goal – he knows that we've wanted more goals from him this season and he's certainly capable of getting them.

We still had to work hard to keep that lead. I thought we were a little jittery at the back at times, as we were against Southend and it took two great saves from Mark Kendall to ensure our win. I don't want to be too critical of our defending – our record this season speaks for itself with just 54 goals conceded and only the top seven teams have a better record than that so all credit to our defence this season and to goalkeeper Mark Kendall who has played in every one of our fifty-five League and Cup matches this season and is in fact the only player to have done so.

Tonight is our final game of the season and if we beat Swindon then we'll finish in sixteenth place, which I think would be a fair reflection of the team's ability. Of course, if we do win tonight it will send our opponents Swindon Town into Division Four for the first time in their history, but that's football and we shall be looking for a good performance to finish this season.

It was obviously the 1–1 draw against our opponents ten days ago that proved to be a more than vital result for both Swindon and ourselves. If we had lost that match it would have meant that the issue for both teams would have rested on tonight's game. It did look as if Swindon would get well clear following their run of four wins in six matches from the middle of April to early May but our draw with them seems to have been the crossroads for us both – we took advantage of our game in hand by defeating Southend here a week ago and clinched our safety on Saturday, while Swindon went down 3–0 at Portsmouth on Saturday. So it's now between them and Walsall for the remaining relegation spot. We shouldn't finish without paying tribute to our supporters who have watched a Club that has occupied a position in the lower half of the table for a great deal of the season. Yet we have averaged attendances at home of over 4,000 and considering the general economic climate, added to our record at Somerton Park, it isn't at all bad and we are very grateful for that support. We've now got to look ahead to the coming season and in the next few weeks decisions affecting the Club's future playing resources will be made.

After tonight there are a couple of events taking place that will be of interest to you – on Thursday night we shall all be attending the "Player of The Year" Dance at Tiffany's in Newport and we're all keen to see who our supporters have chosen through the "South Wales Argus", while next Sunday afternoon we take a team up to Abertillery Rugby ground to play The Good Sports XI in a match to raise funds for The Terry Morgan Appeal. Terry was a youth player at Somerton Park but he suffered serious injury while playing Rugby for Abertillery and is now confined to a wheelchair. We look forward to seeing as many of our supporters as possible on Thursday night and we hope that there will be a big crowd for Sunday's game for what is a very worthwhile cause.

TONIGHT'S COVER — Action against Southend last Tuesday as John Aldridge is challenged by opposing defender Dave Cusack. (Pic. by Colin Dowd)



See you all
next season in
Division Three!

END of SEASON
SALE

—+—
30% off all
Stock in our
Shop

Bob Banker says:
Who's the Player of
the Year?
It's quite a job to
pick it
But Supporter of the
Year is clear
—It's no one else
but . . . ?

NEWPORT COUNTY BONDS
Obtainable from Club Offices
before and after Home matches or
9.30 a.m. - 5.00 p.m. weekdays
also available from the Supporters' Club
on Match days

Somerton Diary

FORTHCOMING EVENTS

MAY

TUESDAY 18th — Our final League match of the season when Swindon Town visit Somerton (7.30 p.m.).

WEDNESDAY 19th — We're at The Greyhound Inn, High Street, Newport, for our Weekly Lottery Draw at approx. 8.30 p.m.

THURSDAY 20th — Our Annual Player-Of-The-Year Dance takes place at Tiffany's, Newport from 8.00 p.m. to 1.00 a.m. Tickets — £1.50 each available from our Commercial Dept. Lottery Results as usual in the sports pages of the *South Wales Argus* & *South Wales Echo*.

SATURDAY 22nd — The F.A. Cup Final at Wembley. We're not in it this year!

WEDNESDAY 26th — Our Weekly Lottery Draw visits O'Reilly's Bar, North Street, Newport starting at approx. 8.30 p.m.

THURSDAY 27th — Keep an eye on the *South Wales Argus* and *South Wales Echo* sports pages for the Lottery results. From this week on, until the start of next season, our Lottery Draw will operate on a fortnightly basis.

CHAIRMAN'S VIEW

TONIGHT'S match brings us to the end of what has proved to be a very hard and traumatic season. After an encouraging start, we have had a constant struggle to preserve our Third Division status. However, this has now been achieved and as long as we can learn from our mistakes I am confident that we can continue the progress that has been made at the Club in recent years.

Many Clubs in Football are experiencing financial hardship at the present time, and Newport County are no exception. Therefore, in the future, more emphasis will have to be placed on the Youth-Development policy. With this aim in mind, we are pleased that Graham Reynolds has rejoined the Club as Youth Development Officer, a position which is vital in our future progress.

Like other Clubs, we will have to operate on a much smaller budget in future and that, of course, means a tighter control over finances and careful pruning of Staff levels both on and off the field. Of course, the development of the Youth Policy will take time but I am sure that we are taking the right course for the future.

I know that many of you have been disappointed at the lack of Reserve-



• RICHARD FORD

Team games at Somerton Park this season but I am pleased to say that next season will see the return of regular Saturday Reserve-Team Football in the Western League. Coupled with a more comprehensive Youth Team fixture list it will ensure many more games for our Season-Ticket Holders.

A special mention for Richard Walden who tonight will be playing his last game for the Club. He has given us excellent service and has been a model professional. I am sure you will all join me in wishing Richard and his family well in the future. At tonight's game, leaflets displaying Season-Ticket prices for next season will be distributed.

Although there are some increases, they are no more than 7% and, indeed, where possible we have avoided any increase. Due to a higher early-buying discount there is also a reduction in some instances and our admission-charge still remains one of the most competitive in the Football League.

A word of praise for the hard work done behind the scenes this season — I have always believed that the work of these people is vital to the Club and although they are too numerous to name, I thank all of them for their efforts. The condition of the playing-surface has been the envy of many Clubs this season and is an indication of the type of behind-the-scenes work to which I am referring, and we are proud of the fact that we now have one of the best pitches in the Football League.

Finally, on behalf of the Directors I thank all our Supporters for the support you have given us through a difficult season. We have not given you a lot to cheer about but your support, both through the turnstiles and for our Commercial activities, is vital if we are to start climbing back up the ladder of success. With your help I am sure we will. Thank you, and see you next season.

THERE was talk of promotion for SWINDON TOWN in mid-October when the Wiltshire club led the table, but then followed a disastrous two months when they took just two points from ten games. At the turn of the year they were really struggling, but at the end of the cold spell in mid-January they started a fine revival which suggested that they would have no problems. However, they've suffered from inconsistency as illustrated by "Their Record" on the opposite page. In recent weeks they've beaten promotion candidates Lincoln and Oxford, but our 1-1 draw at The County Ground ten days ago threw the relegation issue wide open and, with their visit to Portsmouth taking place last Saturday after we went to press, it may well be that everything will rest on tonight's game!

Recently back in their line-up has been last year's leading scorer **ANDY ROWLAND**, who returned to score a vital winner against Lincoln City on April 24th following a three-month absence due to a hamstring injury. A former Derby apprentice, he was signed from Bury in September 1978 and was ever-present this season up to the time of his injury in early January. He's been playing up front with former England Schools Cap **PAUL RIDEOUT** who has been a regular this season, having scored fourteen goals prior to the weekend, and he made a scoring debut last season as an apprentice, signing professional forms last August. In our recent match at The County Ground, Cardiff-born winger **HOWARD PRITCHARD** appeared as substitute and he was an August signing from Bristol City, having been a regular in the side since mid-November. Other



Swindo

They are managed by locally-born **JOHN TROLLOPE**, one of the most outstanding one-club servants in the history of League football. He began his career as a full-back with the Club in the late 1950s, making his debut in August 1960 and appearing in no fewer than 770 Football League games until November 1980 when he took over as manager from Bob Smith. In fact, John has twice retired from playing — the first time was in January 1979 when he decided to concentrate on his youth-team coaching job at the Club. But in early September 1980 he returned to the team after their bad start and, for his loyal service to the Club, he was awarded the M.B.E. by Her Majesty The Queen.

forwards who have played this season are Leeds-born striker **ROY GREENWOOD**, Liverpool-born winger **STEVE ABBLEY** and close-season capture **CRAIG MOORES**, also a winger who came from Bolton and had a few games in the early part of '81/82. Ex-Hull City and Sunderland forward Greenwood, signed from Derby in March 1980 and originally a winger, has been a fairly regular member of the side this season but he was out of the line-up for the five games prior to the weekend while Abley, who was signed from local football in '78/79, has had several matches this season. A comparatively recent signing is striker **JIMMY QUINN**, who arrived in December from North Wales side Oswestry and he had a couple of first-team games in early April, while player/coach **KEN BEAMISH** made two appearances in attack in February and he's an experienced striker who joined the Club last July from Tranmere to whom he had returned after a consistent scoring career which had begun with them and continued at Brighton, Blackburn, Port Vale and

Bury.

in midfield, skipper **ROY CARTER**, who missed one of his two penalties against us ten days ago, had played in all but one of this season's games prior to last weekend, and he was then leading scorer with fifteen goals in League and Cup. Born in Torpoint, he was with Falmouth and Hereford before joining Swindon in December 1977, and he's also played in defence for the Club. Also a midfield regular in '81/82 has been close-season signing **GARY EMMANUEL** from Bristol Rovers who has played in most of this season's matches. Swansea-born Emmanuel, whose father Len played for Newport County shortly after the war, started with Birmingham City before joining Rovers in December 1978 and he's a former Welsh Under-23 Cap. Early April saw the return to the side of **MIKE GRAHAM** to play in a midfield role, though the former Bolton player, signed last summer, was a regular defender up to Christmas after which he was out through injury and couldn't regain his spot when fit. He had a couple of games at full-back at



SWINDON TOWN's '81/82 line-up . . . BACK (from left) — Brian Hughes, Jimmy Allan, David Round, Mark Stevens, Kevin Baddeley. MIDDLE (from left) — Chris Kamara (now Brentford), Roy Greenwood, Charlie Henry, Gary Emmanuel, Mike Graham, Roy Carter (Capt.). FRONT (from left) — Dave Peach (no longer with Club), Andy Rowland, Steve Abley, Craig Moores, Paul Rideout, Kenny Stroud, Howard Pritchard, Russell Lewis, Martin Blackley.

n Town



The Club was formed in 1881, turning professional in 1894 when they became original members of the Southern League which formed Division Three in 1920. They remained in the Third Division until their promotion to Division Two in 1963 and they were relegated two years later. In 1969 came their greatest moment when they not only regained promotion, but also defeated Arsenal 3-1 in the League Cup Final at Wembley. They were relegated again in 1974 and have since remained in the Third. Anglo-Scottish Cup-Winners in 1970, they were F.A. Cup Semi-Finalists in 1910 and 1912 when they were a Southern League side. County Ground Attendance Record - 32,000 v. Arsenal (F.A. Cup 3rd Round) January 15th, 1972.

the start of the month and had played in the ten games up to last weekend. Nantwich-born midfielder **GARY WILLIAMS** has been back in the side for the last few games and he was a £40,000 summer signing from Blackpool. A former Tranmere and Djurgaaen player, he's been a regular this season, alternating between mid-field and full-back, while former apprentice **BRIAN HUGHES** has also been an '81/82 midfield regular though he'd only appeared in two of the ten games before the weekend and he made his debut in August 1980.

A regular at full-back this season has been Londoner **CHARLIE HENRY**, a former apprentice who signed professional in February 1980. He made his debut early last season as a striker but soon reverted to his current role in which he's since remained, apart from a few central-defensive appearances. Locally-born **KEVIN BADDELEY**, a close-season signing from Bristol City, has had a regular full-back spot since early December when he came in to replace the injured Henry for a brief spell, and he did so well that he was switched to the opposite flank on Henry's return. One other player to appear at full-back this season was former Gillingham and Southampton defender Dave Peach, but the ex-skipper was released in mid-season. In the central-defensive positions, Blaengwynfi-born **RUSSELL LEWIS** had missed only four games before the weekend, three of them through suspension, and he joined the Club from Welsh League football in September 1976. He's played at right-back in recent seasons, but last year reverted to his current role and was named "Player of The Year". A regular alongside him at the back since mid-November has been the Club's longest-serving player, **KENNY STROUD**, twelve years at The County Ground. An elbow injury kept him out of the side in the early part of the season, and after sustaining a head injury against us ten days ago he should have been fit for last weekend's game. Completing the line-up is Scottish-born goalkeeper **JIMMY ALLAN**, who is ever-present this season and he's been with them since signing from Scottish junior

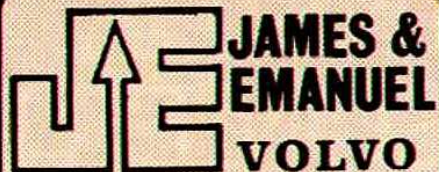
football in 1970, having made his 300th League appearance in February.

Their '81/82 Record To Date:

August		F-A	Att.
29 Wimb'l'd'n Div. 3	(H)	W 4-1	5,630
September			
1 Wrexham FLC.1	(A)	L 2-3	2,068
5 Chester Div. 3	(A)	D 0-0	1,798
12 Preston Div. 3	(H)	W 4-0	5,695
15 Wrexham FLC.1	(H)	L 0-2	6,776
19 Exeter C Div. 3	(A)	W 2-1	4,372
21 Southend Div. 3	(A)	D 0-0	4,578
26 Reading Div. 3	(H)	L 0-2	9,316
29 Chest'f'd Div. 3	(H)	L 1-2	5,365
October			
3 Burnley Div. 3	(A)	W 2-0	3,359
10 Carlisle U Div. 3	(H)	W 2-1	5,265
17 Bristol R Div. 3	(A)	W 4-1	8,779
20 Walsall Div. 3	(A)	L 0-5	6,010
24 Donc'st'r Div. 3	(H)	D 2-2	6,750
31 Gill'gh'm Div. 3	(A)	L 0-1	8,410
November			
3 Brentford Div. 3	(H)	L 0-3	6,369
7 Millwall Div. 3	(H)	L 1-2	5,710
14 Huddersfd Div. 3	(A)	L 0-3	7,802
21 Taunton FAC.1	(H)	W 2-1	4,494
28 Lincoln Div. 3	(A)	L 0-2	3,132
December			
5 Bristol C Div. 3	(H)	D 0-0	6,949
15 Sutton T FAC.2	(H)	W 2-1	2,890
26 Plymouth Div. 3	(A)	L 1-2	8,185
30 Fulham Div. 3	(H)	L 1-4	5,641
January			
2 Luton T FAC.3	(A)	L 1-2	9,488
23 Wimb'l'd'n Div. 3	(A)	D 1-1	2,084
31 Exeter C Div. 3	(H)	W 3-2	5,656
February			
6 Preston Div. 3	(A)	D 0-0	5,606
9 Southend Div. 3	(H)	D 0-0	4,472
13 Burnley Div. 3	(H)	L 1-2	4,838
20 Reading Div. 3	(A)	D 1-1	4,130
23 Portsm'th Div. 3	(H)	W 2-0	4,860
27 Carlisle U Div. 3	(A)	D 1-1	4,633
March			
6 Bristol R Div. 3	(H)	W 5-2	6,689
9 Walsall Div. 3	(H)	D 2-2	4,446
12 Donc'st'r Div. 3	(A)	D 0-0	3,532
20 Gill'gh'm Div. 3	(H)	L 0-1	4,908
28 Millwall Div. 3	(A)	D 0-0	4,391
April			
3 Huddersfd Div. 3	(H)	L 1-5	3,872
7 Oxford U Div. 3	(A)	L 0-5	7,354
10 Plymouth Div. 3	(H)	L 0-2	4,056
13 Fulham Div. 3	(A)	L 0-2	6,655
17 Bristol C Div. 3	(A)	W 3-0	6,524
19 Brentford Div. 3	(A)	L 2-4	5,374
24 Lincoln Div. 3	(H)	W 1-0	3,981
27 Chester Div. 3	(H)	W 3-0	3,848
May			
1 Chest'f'd Div. 3	(A)	L 1-2	2,020
4 Oxford U Div. 3	(H)	W 3-2	7,880
8 Npt. Co. Div. 3	(H)	D 1-1	5,676
15 Portsm'th Div. 3	(A)

This Season's Scorers (League and Cups)
(NOT including last Saturday)

Carter 15(6 pens.), Rideout 14, Rowland 8,
Pritchard 4, Emmanuel 3, Greenwood 3,
Henry 3, Hughes 3, Williams 3, Baddeley 1,
Graham 1, Lewis 1, Opponents 3.



J & E GARAGE
WHARF ROAD, NEWPORT
Telephone 213463

also

ST MELLONS GARAGE
CARDIFF
Telephone 77183

SERVICE . M.O.T. PARTS . SALES

MAGNUS ORGAN

Fuel Distributors -

all classes of home coal
and smokeless fuel supplied.
Diploma Coal Merchants -
qualified staff at your service -
pre-packed service.

Prices on Enquiry
Telephone Newport 62035
[after hours 272698]

Courtybella Yard,
17 Courtybella Terrace,
Newport, Gwent.

LEEWAY LEISURE

Your Local Caravan &
Water Sport Hypermarket.

ALL LEADING MANU-
FACTURERS CARAVANS &
BOATS IN STOCK ALL THE
YEAR ROUND IN OUR HUGH
INDOOR SHOWROOM. WHY
BOTHER TO LOOK FURTHER

TRY LEEWAY LEISURE
LEEWAY
NEWPORT INDUSTRIAL
ESTATE, NEWPORT, GWENT
TEL: 276611

CRASHWORTH & COMPANY

Specialists in quality car resprays
and general servicing. Jaguar
servicing and maintenance (over
45 years' experience). All
insurance repairs undertaken. All
work guaranteed and backed by
the MAA and VBRA.

PORTLAND STREET GARAGE
NEWPORT GWENT
Tel : Newport 58304

INSIDE SOMERTON

With

Richard Shepherd



Success . . . and Failure!

• This season is the first time in seven years that no Welsh club has won promotion. The full list is . . . 1975/76 — Cardiff City (Div. 3 to Div. 2); 1976/77 — Wrexham (Div. 3 to Div. 2); 1977/78 — Swansea City (Div. 4 to Div. 3); 1978/79 — Swansea City (Div. 3 to Div. 2); 1979/80 — Newport County (Div. 4 to Div. 3); 1980/81 — Swansea City (Div. 2 to Div. 1). The wheel has turned almost full circle this year — Wales' failure to qualify for the World Cup Finals after winning the opening four matches. Wrexham's relegation to Division Three, together with the relegation fights of both ourselves and Cardiff City, which hadn't been settled at the time of writing, would have made it a totally disastrous season had it not been for the superb efforts of Swansea City in Division One.

Close-Season Work

• Our pitch, which has provided a perfect playing surface throughout the whole of this season, undergoes its annual "refit" in the next few weeks, with a treatment of weed-killer and hollow-slitting. The surface has regularly improved over the last few years since it was originally renovated and by next August should be better than it has ever been.

Video Library

• At the end of each season we usually make up a video-tape of edited highlights from exciting matches. The matches which have been retained so far are the games against Cardiff City (A) Welsh Cup; Reading (H) League; Portsmouth (H) League; Bristol Rovers (H) League; Walsall (H) League; Gillingham (H) League; Southend (H) League, and last Saturday's game with Huddersfield. Supporters will be able to borrow these VHS tapes during the summer and full details can be obtained from our Commercial Department. Other tapes

available are edited highlights of '79/80 (our promotion season) and last year's matches with Carl Zeiss Jena in the Cup-Winners' Cup.

'81/82 Memories

• Our start of season run when we won our opening three League games was the first time that Newport County had achieved that feat since the beginning of the 1934/35 season. The 1-1 draw with Bristol City at Somerton on January 30th was the final appearance of the "old" Bristol City before eight of their players agreed to terminate their contracts. No fewer than forty-four different players appeared in our twenty-three reserve team friendly matches. Despite the fact that we are bound to finish the season in a lower position than last season, our defensive record is in fact better as we conceded sixty-one goals last year, while this season we had let in fifty-four prior to last weekend. No fewer than nine of our first-team players have undergone periods of suspension this season. Two Newport County players have been on loan this season . . . Howard Goddard had a spell with Blackpool in September while Dave Gwyther went to Crewe in January/February. Just two "doubles" to record in '81/82 with home and away wins against Doncaster Rovers and Southend United.

Two Decades Ago

• It's some time since we defeated Swindon in a League match at Somerton — January 28th, 1960 was the date, we won 2-0 and Ken McPherson was one of our scorers. McPherson, who was a centre-forward with us, left at the end of that season and in fact joined Swindon for whom he played at centre-half, helping them to reach Division Two in 1963. Our Trainer/Coach, Dave Williams, well remembers that '60/61 season because he made his First-team debut for us at Swindon's County Ground.

Ever-Present?

• Considering the fact that a few months ago Mark Kendall was on the point of entering hospital for a knee operation, our former Tottenham goalkeeper has done well to perform at a consistently high level. At the time of writing, Mark was ever-present in all our League and Cup matches and was keen to end the season with a 100% record. Mark, in fact, enters hospital for that operation shortly after the end of this season but he's hoping to be fit to travel up to Chesterfield, where he was once on loan, since their Supporters' Club have invited him to present their Player of The Year Trophy to the winning player.



• MARK KENDALL
— a 100% record!

Northern Programme Fair

• If you're interested in collecting rare match programmes and you are in the north of England in early June, then you will be interested in attending the Accrington Football Programme Fair to be held in Accrington Town Hall on June 5th. The organisers have told us it takes place from 11.00 a.m. to 4.00 p.m. that day and admission is 25p, with over 100,000 programmes on display and sale.

Forty-eight Hours To Go . . .

• On Thursday night, May 20th, at Tiffany's, Newport, our Player of The Year Dance takes place and the winner will be announced that night as will our Supporter of The Year. Tickets — £1.50 each — are available from our Commercial Department.

Happy Days

• Two of our players tonight appear in their last match as bachelors — Grant Davies and Nigel Vaughan are to be married next month and their respective fiancées

are both on the staff of Newport County. Grant marries Catherine Ballinger of our Commercial Department while Nigel marries Lynn Vickery who works in the Club's Administrative Office.

Worthwhile Cause

• It's not the final match of the season for several of our players — next Sunday, May 23rd, a number of them travel to Abertillery Park, the home of Abertillery R.F.C. to take part in a fund-raising match for Terry Morgan, the Abertillery Rugby player who is confined to a wheelchair after suffering serious injury in a game. Providing the opposition will be The Good Sports, a team of past and present Welsh sporting personalities who invariably provide a skilful and entertaining Sunday afternoon's football. Among our former players in their regular line-up are Gary Bell, Bobby Woodruff, Brian Clark, and Brian Harris, as well as Ronnie Bird our ex-trainer/coach.

Deputy Steve

• It was intended that our reserve-team 'keeper Ian Watson would face those penalties to be taken by local schoolboys in last Tuesday's Midland Bank Penalty Finals, but Ian injured a shoulder in a Charity Match at Monmouth two days earlier. Fortunately, youth-team 'keeper Steve Watkins was able to deputise at short notice and he certainly put up a fine display in the Final Round at half-time, saving most of the ten penalties taken by the two finalists.

Unclear

• Whether or not any relegation issue for either side was resting on the outcome of tonight's game was unclear at the time of writing, but one of our players who would have an interest in the future of both clubs is former Welsh International Rod Thomas, who joined us in late March. The ex-Cardiff City player spent nine years with Swindon, who were his first League club, and he played nearly 300 League games for them, one of his team-mates in nearly all of those matches being the current Swindon manager, John Trollope.



• ROD THOMAS
—once with Swindon



• A memorable game in January against relegated Bristol City when a number of well-known players made their last appearance for the Ashton Gate side including Trevor Tainton (7) and Peter Aitken (4) seen here watching Jeff Johnson heading across goal. Referee Clive White of Harrow (left) will be in the news next weekend when he takes charge of the F.A. Cup Final between Tottenham and Queen's Park Rangers.

MATCH OF THE DAY



PANASONIC VIDEO

TO

PANASONIC TELEVISION



The Perfect Match from

Graham Williams
80 Church Road
Newport
Tel. 59209

Best Prices — Best Service — Sales Rental
Full Range Available

GWENT CARSOUNDS

CAR RADIO & STEREO
SPECIALISTS

FREE FITTING SERVICE
AVAILABLE

VISIT OR PHONE US AT:-
RUDRY STREET, NEWPORT

214955

"WE ARE SOUNDLY AHEAD
OF THE REST"

D & M OLIVER (PATIO TUBS)

Everything for the ornamental garden, allotment and patio scene, fruit tree, shrub area.
Coates Fencing & Crittall Greenhouse Stockists.

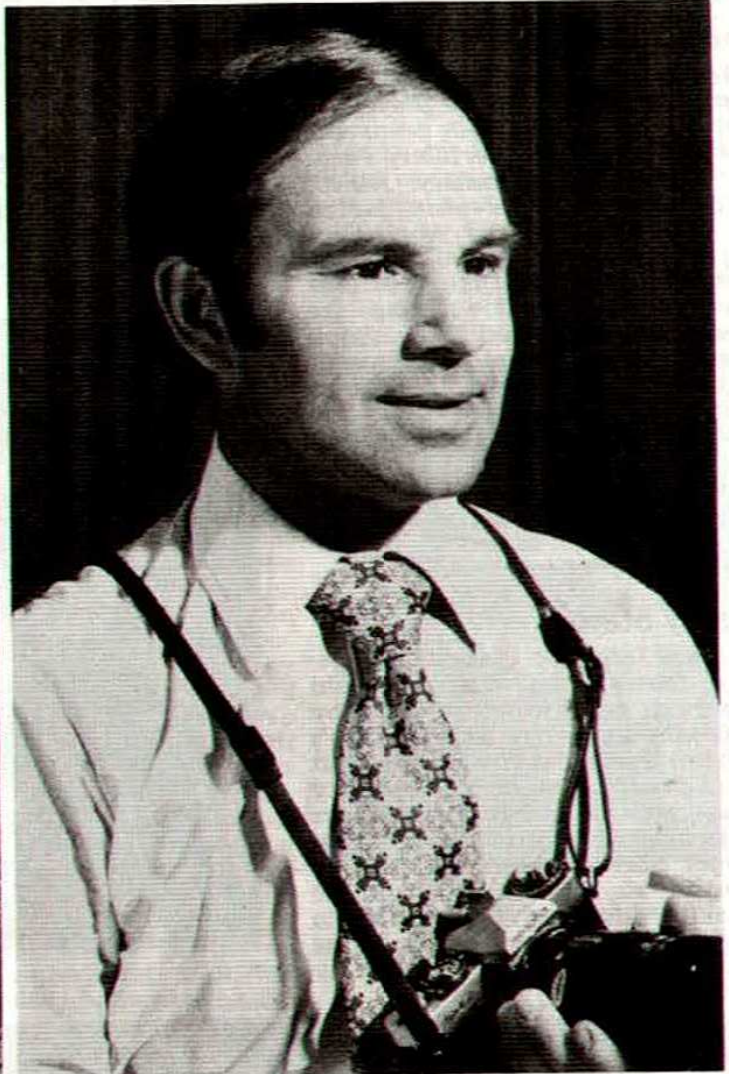
Open 7 days a week
7.30am — 7.30pm.

Marden Nurseries
Old Chepstow Road,
Langstone, Near Newport,
Gwent.

Tel. Llanwern 41-2386

BACKGROUND SQUAD

Featuring The People Who Work Behind The Scenes At Somerton . . .



• These are our two Club Photographers — JAN PREECE (*left*) and COLIN DOWD (*right*). Both have been connected with us for a number of years and their work appears regularly in our match magazines.

FOR MOST LEADING MAKES OF TOYS AND GAMES
AT DISCOUNT PRICES, NEXT TIME CONTACT

EDMUNDS **TOYS & GAMES**

NEWSAGENT, CONFECTIONER, TOBACCONIST, TOY DEALER

UNIT 1 & UNIT 5, FALLOWFIELD DRIVE
PONTFAEN, NEWPORT, GWENT
Telephone NEWPORT 277434/272980



IN RESERVE



SECOND TEAM '81/82 Schedule:

(Home matches in CAPITALS)
(f) - friendly

Date	Day	Opposition	F-A
25 Aug.	(Tue)	Forest Green (f)	1-0
5 Sep.	(Sat)	Swansea City (f)	1-4
7 Sep.	(Mon)	Bargoed R. (f)	2-1
11 Sep.	(Fri)	Cardiff City (f)	0-2
19 Sep.	(Sat)	SWANSEA C. (f)	0-2
23 Sep.	(Wed)	BRISTOL C. (f)	1-3
30 Sep.	(Wed)	Exeter City (f)	0-3
14 Oct.	(Wed)	WIMBLEDON (f)	1-1
21 Oct.	(Wed)	EXETER C. (f)	3-0
28 Oct.	(Wed)	TROWBRIDGE (f)	2-2
2 Nov.	(Mon)	STOKE CITY (f)	3-1
12 Nov.	(Thu)	Queen's P.R. (f)	2-1
17 Nov.	(Tue)	CARDIFF C. (f)	2-2
21 Nov.	(Sat)	Swansea City (f)	0-5
5 Dec.	(Sat)	BIRMINGHAM (f)	1-0
26 Jan.	(Tue)	Trowbridge (f)	0-3
19 Feb.	(Fri)	SWANSEA C. (f)	1-1
18 Mar.	(Thu)	Swansea City (f)	2-4
27 Mar.	(Sat)	BRISTOL CITY (f)	1-0
21 Apr.	(Wed)	SWANSEA C. (f)	0-2
27 Apr.	(Tue)	OXFORD U. (f)	3-0

Our last line-up

April 27th v. OXFORD UNITED (H)
Friendly Won 3-0 (h.t. 1-0)
Watson, Hopkins, Bodin, Lees, Broome
(sub. Thorpe), Williams C. (sub.
Murphy), Bailey (1), Bishop (1),
Waddle (sub. Jervis), Gwyther (1),
James, N.

This Season's Scorers:

Aldridge 3, Gwyther 3, Bailey 2,



• NEIL JAMES (top) has appeared in all our reserve games this season except one, while PAUL BODIN (below) has also been absent on just one occasion.



Bishop 2, Bodin 2, Goff 2, Lowndes 2,
Waddle 2, Goddard 1, Hopkins 1,
Jones 1, Relish 1, Vaughan 1.

THIRD TEAM

'81/82 Schedule:

(Home matches in CAPITALS)

(Lge.) - Sth. Wales & West Yth. Lge.
(WYC) - Welsh Youth Cup

(FAYC) - F.A. Youth Cup

Date	Day	Opposition	F-A
1 Sep.	(Tue)	Exeter City (Lge.)	1-3
16 Sep.	(Wed)	Cardiff City (Cup)	0-2
6 Oct.	(Tue)	CARDIFF C. (Lge.)	0-1
18 Oct.	(Sun)	NPT. YMCA (WYC)	0-1
3 Nov.	(Tue)	OXFORD U. (FAYC)	2-5
29 Nov.	(Sun)	Army Apps.	4-1
2 Feb.	(Tue)	SWANSEA C. (Lge)	0-3
15 Feb.	(Mon)	Plymouth A. (Lge.)	1-2
2 Apr.	(Fri)	Swansea City (Lge)	1-4
5 Apr.	(Mon)	TORQUAY U. (Lge.)	2-0
13 Apr.	(Tue)	Cardiff City (Lge.)	3-4
22 Apr.	(Thu)	EXETER C. (Lge.)	1-2
26 Apr.	(Mon)	PLYMOUTH (Lge.)	2-0
29 Apr.	(Tue)	Torquay U. (Lge.)	0-1

Our last two line-ups:

April 26th v. PLYMOUTH A. (H)
League Won 2-0 (h.t. 0-0)

Clark, McCoy, Medcroft, Pratt, Thorpe,
Young, James L., Williams C (1),
Jervis, Murphy, Fleming (sub.
Rathbone) other scorer - o.g.

April 29th v. TORQUAY UTD. (A)
League Lost 0-1 (h.t. 0-1)

Watkins, Rathbone, Bodin, Pratt,
Murphy, Young, McCoy, Williams C.,
Jervis, Brown, Townsend.

This Season's Scorers (All matches)

Fleming 3, Thorpe 3, Bodin 2 (1 pen.),
Williams C. 2, Goff 2, McCoy 1,
Townsend 1, Waite 1, Opponents 2.



COLLEY MOTORS



SALES
SERVICE
PARTS
Proprietors
J C COLLEY
& R C COLLEY

MAIN TOYOTA DEALER FOR GWENT
NEW AND USED CAR SPECIALISTS

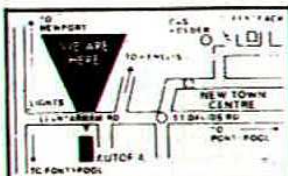
SHOWROOMS
& WORKSHOP
MAENDY WAY
WEST PONTNEWYDD
CWMBRAN GWENT
Telephones 2253 & 4974



Crow Valley Tyres Limited

AUTOPIA - LLANTARNAM ROAD
CWMBRAN - GWENT

THE TRADE TYRE CENTRE FOR EVERYONE
7 DAY WEEK TYRE SERVICE
CHOICE OF OVER 20 DIFFERENT MAKES -
REMEMBER - ALL AT OUR TRADE PRICES



Telephone CWMBRAN 66316

THE GOLF SHOP

Caerleon Golf Course
Open to the Public
7 Days a Week
Professional
Harry Smith.
Caerleon 420 342

Minimum 10% Discount on Recommended Retail Price
Lessons include Video Lessons

25% off all Sale Goods if you produce this programme





• Action against Southend a week ago in our 3-2 win as Jeff Johnson (left) goes near with this second-half shot.

(Pic. by Colin Dowd)

CLARK EATON GLASS & GLAZING

Glass All Types, Domestic, Commercial and Industrial
Mirrors - Large Selection

Aluminium, u.P.V.C., Hardwood
Patio Doors, Entrance Doors, Windows,
Double Glazing, Shopfronts.

Emergency Glass Replacement Service.

Showrooms at:-

Vivian Road, Newport, Telephone 62705

Also

Hadfield Road,
Leckwith,
Cardiff.

West Street,
Gorseinon,
Swansea.



HARRIS TELEVISION LTD

70 LOWER DOCK STREET,
NEWPORT, GWENT.

TEL. 59402

& 280 CROMWELL ROAD

A PERMANENT NEWPORT
FIXTURE

CENTRAL PRESS (NPT) LTD.

PRINTERS, DESIGNERS,
BOOKBINDERS OF DISTINCTION.

NEW RUPERRA STREET

NEWPORT, GWENT.

TELEPHONE 66507

HOME & AWAY SUPPORTERS
USE

NEWPORT TAXIS

TOWN/STATION

Booking **67000** Office

RADIO CONTROLLED

ANYTIME ANYWHERE
DISTANCE NO OBJECT

CONNECTING SERVICE
FOR
COACH, PLANE OR TRAIN
A SPECIALITY

TODAY'S BALL BOYS . . .

• Making their first appearance of the season at Somerton Park are Monnow Junior School, Bettws, and on duty this afternoon are: Kevin Martin, Garren Williams, Shane Williams, Robert Smith, Rown Turner, Sean Casey. David Jeremy and Lee Bidmead. The boys will be accompanied by two of the school staff and will be seeing behind the scenes before the kick-off.



MATCH MASCOT

• Pictured here in his junior Newport County kit is today's match-mascot — 9 year-old **KIERAN BRESLIN** of 21 Hampshire Crescent, Newport. Kieran is a very keen supporter of ours and attends St. Patrick's School which overlooks Somerton Park. He plays for Lliswerry Stars and Newport Under-10s Schools Team and he comes to every home game. His favourite player is Nigel Vaughan and his father and grandfather will be here today to see him lead out the team.

COUNTY QUIZ

(Answers at bottom . . .)

1. Which Newport County centre-forward moved to Swindon Town and helped them to promotion as a centre-half?
2. Newport County have had two managers who had connections with Swindon — who were they and when did they manage us?
3. Our Christmas holiday matches with Swindon during our first promotion season of '38/39 had two memorable results — what were they?
4. One of the forwards who played in those games for us joined Swindon in January 1946 — who was he?
5. Our last victory at Swindon was in September 1955. The goals in our 2-1 win were scored by Tommy Johnston and Harry Harris — to which clubs were they later transferred?
6. We signed a former Cardiff City half-back from Swindon in '61/62 — what was his name?
7. Two Newport County players left Somerton for Swindon in the '75/76 season — who were they?
8. Who scored our goal in last season's 1-1 draw at Swindon?

1 — Ken McPherson; 2 — Louis Fage (1935-37) and Bill Lucas (1953-1974); 3 — Swindon Town 8 Newport Co. 0 and Newport Co. 6 Swindon Town 4; 4 — Albert Derrick; 5 — Johnston to Leyton Orient, Harris to Portsmouth; 6 — Bob Scott; 7 — Wynne Hooper and Steve Alzewood; 8 — Alan Waddle.

WATERLOO INN
ST. MARY'S ROAD
NASH

Tel.: Newport 273854

COUNTRY FREEHOUSE
SERVING TRADITIONAL ALE

A LA CARTE RESTAURANT
WITH A FINE SELECTION
OF WINES

COLD BUFFET

+

BAR SNACKS

ALSO

SET SUNDAY LUNCHES

½ PRICE FOR CHILDREN

RESTAURANT OPEN 7 DAYS A WEEK

BAR SNACKS ALWAYS AVAILABLE

FOR ALL GARDENING
AND PET REQUIREMENTS

A. J. North
& Son

TEL: 58756

144 CHEPSTOW ROAD
MAINDEE SQUARE NEWPORT

D. R. DUKE

High Class

Family Butcher
& Deep Freeze
Caterer



298 CHEPSTOW ROAD
NEWPORT GWENT Tel 277055

TELEPHONE NEWPORT 59075

I. MOGFORD
& SONS

WHOLESALE GROCERS
AND PROVISION MERCHANTS

NEWPORTS FIRST
CASH AND CARRY GROCERS

AGINCOURT STREET,
NEWPORT
(off Malpas Road)
TRADE ONLY

C. MARKS
& Co.
(Newport)



Radio &
Electrical Dealers

89-90 COMMERCIAL ST.,
NEWPORT, GWENT,
Telephone Newport 64711

also at
13 WYNDAM ARCADE
CARDIFF

For your Radio/T.V./
Electrical Equipment
& C.B. Components

 **AUTOPIA**

MOTOR PARTS
MON & BORDER [MOTOR FACTORS] LTD.

LLANTARNAM RD., CWMBRAN
(Near Cwmbrian Stadium)

We are open 7 days a week and attempt to give the public a complete and competitive parts service. You have no parking problems.

'JUST DRIVE IN
AND COLLECT YOUR PARTS'

TELEPHONE CWMBRAN 66366/7/8

YOU WON'T BE GIVEN THE
COLD SHOULDER....

when you
call on....

CB



REFRIGERATION

Specialists in Commercial
& Domestic Refrigeration

TREGARE STREET,
NEWPORT Tel: 50181



A·R·D· Leasing Ltd

for *Leasing and Contract Hire*
TEL Cwmbran 69151



**PRE
M
COM**

Amber Action

Newport Co. 3
Southend Utd. 2

. . . . and goal-mouth action from last Tuesday's vital home win over the Essex side whose hopes of promotion finally disappeared after this result.

• It was Karl Elsey (11) who gave us a 2-1 half-time lead with this looping header (left), and it was the former Queen's Park Ranger player's seventh goal of the season, all scored in Division Three. In fact, it's Karl's best total of his career during a season in which he's been a regular member of the side. There were no goals last week for John Aldridge (right) who saw this header saved and John will have been hoping for a few goals from these final two games in order to challenge Tommy Tynan for our top-scorers' spot.

(Pics. by Colin Dowd)

The two teams were:

NEWPORT CO. — Kendall, Lees (sub. Bishop), Relish, Davies, Oakes, Johnson, Vaughan, Lowndes, Tynan, Aldridge, Elsey.

SOUTHEND UTD. — Keeley, Stead, Dudley, Pountney, Moody, Cusack, Mercer, Phillips, Spence (sub. Nelson), Pennyfather, Otulakowski.



RENWICKS TALBOT

57 CHEPSTOW ROAD, N

TEL: 58411 (SALES, SERVICE, HIRE)





**PRESTIGE
MOTOR
COMPANY**

**GWENTS PREMIER
USED CAR CENTRE**

TEL *Cwmbran* 2 2 2 1-2

AUTOPIA

Llantarnam Rd,
Cwmbran.



TALBOT IN GWENT

STOW ROAD, NEWPORT.

(REPAIRS, HIRE)

TEL: 56441 (PARTS DEPT.)



Dateline 3

• While the Second Division relegation issue was still in doubt at the time of writing, all four promotion places in Division Four had definitely been settled and appearing in Division Three next season will be Sheffield United, Wigan Athletic, Bradford City and AFC Bournemouth.

• For Sheffield United manager Ian Porterfield, his side's Championship win completes a remarkable double. The former Raith Rovers, Sunderland, Sheffield Wednesday and Rotherham midfielder led Rotherham United to the Third Division title last season, and it was a shock at Millmoor when he resigned in June to join nearby Sheffield United whom he felt had greater potential. It certainly seems as if he was right because United's attendances have averaged over 13,000 and in the latter half of this season they have on several occasions attracted over 20,000 to Bramall Lane. The promotion battle with Bradford City on March 30th drew an attendance of 24,594 — and these kind of figures certainly justify the outlay of large fees this season. They paid £95,000 in September for Hull City striker Keith Edwards who, in the 4-0 win over Peterborough ten days ago, scored his 35th League goal of '81/82 and earned £5,000 from the Pepsi Golden Goals Award. United also paid Blackpool £100,000 in February for the former Southend winger Colin Morris and he, together with veteran striker Bob Hatton, has scored a number of vital goals. Sheffield United will certainly be an asset to the Third Division next season, particularly in terms of the support which they can attract.

• A new name in Division Three in

'82/83 will be Lancashire club Wigan Athletic, who are managed by the former Bristol Rovers, Liverpool, Nottingham Forest and England defender Larry Lloyd, who has been a regular member of the side this season. Wigan only entered the League in 1978 and they've commanded good support in the last four seasons. They confirmed their promotion ten days ago with a 3-1 home win over Mansfield, thanks to a hat-trick from Eamonn O'Keefe, a £60,000 signing from Everton in January. And playing a vital part in their success this season have been two former Preston players in goalkeeper Roy Tunks, who was signed in November, and midfield player Brian Taylor, who came in late March. It's not often that a manager tries to persuade one of his directors to turn out, but with Bobby Charlton on the Board at Wigan it's been suggested at various times that the former Manchester United and England International should come out of retirement.

• It's odd that another side promoted from Division Four should also have a central defender who is their player/manager, and Roy McFarland, formerly of Derby County and England, can certainly be pleased with his first season in League management. He left Derby just a year ago to take the job at Valley Parade and his side have been amongst the front-runners all season. Our fans will recall how near they came to promotion in the year that we went up, and they fell away badly last season, finishing in fourteenth place. It's been a remarkable season for their Irish striker Bobby Campbell, who has been one of Football's wanderers,

having played for Aston Villa, Halifax Town, Huddersfield and Sheffield United, as well as a spell in the U.S.A. Campbell, who was banned for playing for Northern Ireland seven years ago after some off-the-field incidents, has scored 29 League and Cup goals this season and has been recalled to the International squad by Billy Bingham. Fittingly, it was Campbell who clinched his side's promotion with both goals in their 2-2 home draw against rivals AFC Bournemouth ten days ago, though he couldn't repeat the effort of co-striker David McNiven, the former Leeds forward who scored all four in the 4-1 defeat of Crewe three days earlier.

• One comparatively new manager determined not to be left out of the promotion was David Webb of AFC Bournemouth, who returns to Division Three for the first time in seven years. One of the goals which clinched their promotion in that 2-2 draw at Bradford City came from our former striker Howard Goddard — it was only his second goal since he returned to his original club in December. He'd scored in his first game for them but hadn't been in the side in the last couple of months. Success has certainly paid off for the Club — in recent years they've been used to crowds of two and three thousand, but in the last couple of months attendances have increased to between six and eight thousand.

• Of the Second Division relegation issues, only Orient had definitely gone down at the time of going to print, and the East London side will be appearing in the Third Division next season for the first time in twelve years.



WE SHOP AT

WILDING & KENT LTD

THE QUALITY BUTCHERS
FREEZER FOODS SUPPLIERS

RINGLAND ESTATE
ALWAY ESTATE
KINGSWAY CENTRE
PONT FAEN ESTATE
CWMBRAN TOWN CENTRE

NEWPORT 272336
NEWPORT 272314
NEWPORT 64761
NEWPORT 275384
CWMBRAN 71953

THIRD DIVISION NEWSMEN



• After leading Rotherham United to last season's Third Division Championship, IAN PORTERFIELD (above) has taken Sheffield United to the Fourth Division title with some on-the-field help from United's veteran striker BOB HATTON (below)



HAVWREN

Building Civil Engineering
& Plant Hire Contractors
Industrial & Private
Extensions, Tarmac Drives, etc.

PLANT FOR HIRE

HYMAC'S 580C JCB'S 3C
CASE 450 COMPRESSORS
Dumpers, Pedestrian Rollers,
Welders, Drills,
Angle Grinders, etc.

TEL. NEWPORT 841068



Rabaiotti's

CAFE & RESTAURANT
Fully Licensed

BUSINESS LUNCHES
OUR SPECIALITY
QUALITY FRESH
CREAM CAKES.
HOT OR COLD SNACKS
TO TAKE AWAY

19 North Walk, Cwmbran, Gwent

YOUR LOCAL SPECIALIST
SPORTS SHOP

STUART JONES SPORTS

106 CHEPSTOW ROAD
NEWPORT
GWENT

Telephone Newport 215586



B.&S. HUDSON ROOFING CONTRACTORS

Your local specialists for re-tiling
and re-slating of all roofs

- ★ Over 25 years experience
- ★ 10 years guarantee
- ★ Free quotation without obligation
- ★ Prompt and reliable service

31 Channel View, Bassaleg,
46 Snowdon Close, Ty-Melin,
Risca, Gwent
Tel: Risca 613621 - Rhiwderin 3514

MAT Transport

Clydesmuir Road Industrial Estate
Tremorfa
CARDIFF CF2 2PY
Telephone: 0222 - 482584
Telex: 498579

Any cargo, Any time, Anywhere....
Driver accompanied.

MARINER'S HOTEL, PUB & RESTAURANT

FULL BOARD - 20 BEDROOMS

80 Commercial Road
Newport

recently modernised - good class
accommodation, car parking
facilities

Tel. 51296

COMMERCIAL SCENE

* SPONSORS * LOTTERY RESULTS * CLUB SHOP * AWAY TRAVEL *

End-Of-Season Sale

There are numerous bargains in the way of souvenirs to be found in our Club Shop from our End-Of-Season Sale which is currently taking place. All goods (apart from match-programmes) now have a 30% reduction and all stock must be cleared. The sale continues until the end of the season and the Shop is open not only on match-days but during normal office-hours (9.00 a.m.—1.00 p.m. and 2.00 p.m.—5.00 p.m.).

World Cup Crowns

With three British teams competing in the World Cup, a set of World Cup Crowns will be an ideal memento and, as scarce legal tender collector-items, are likely to grow in value over the years. We have full details of what's on offer, so if you're thinking of investing in them and would like to see a sample, call in and see us because they're only available from League clubs.

Subscription Draw

Winner of the £50 cash prize at our recent home game with Burnley was No. 178 — Mr. Stan Rowlands of Caerleon. Details of all this season's draws can be obtained from the Organiser — David Hando (tel. Newport 62483).

Match-Ball

This has been very kindly donated by The Monmouthshire Building Society, one of Gwent's best-known institutions. We thank the Society for their support, together with that of all other sponsors listed on these pages.

In Charge . . .



• DENNIS SMITH
— Commercial Manager

Supporters' Club Branches

We are hoping to create several branches of our Supporters' Club in the Gwent area. Anyone interested in this idea should contact Commercial Manager Dennis Smith (Newport 277472) who will arrange a meeting.

Lottery News

Our new Lottery Superticket (The Welsh Gamble) with £4,300 in prizes to be won, successfully began on January 27th. We are always looking for new agents who must be over 16 years old and, of course, there are good incentives — 10% commission

New Bingo Ticket

We have recently begun a new Bingo Ticket to be called "IRONSIDES BINGO" with prizes totalling £1,850 to be won. Tickets are just 15p each and contain Three House Bingo Games where you have a chance to win TOP FULL HOUSE £250; MIDDLE FULL

HOUSE £100; BOTTOM FULL HOUSE £50; plus CONSOLATION PRIZES of £1 for any line on any card — NO

LOTTERY RESULTS . . .

Welsh Gamble 10—(Mar. 31st '82)
At The Beaufort Hotel, Newbridge.

£1,000 (29266)	A.V. Symons
£100	Agent R. Beddoe
£500 (14384)	Anonymous
£50	Agent D. Buck
£100 (38133)	D.E. Smith
£10	Agent not yet claimed
£100 (30423)	Cyril Norville
£10	Agent E. Jones
£100 (18908)	R.D. Thomas
£10	Agent not yet claimed
Pontin's Voucher (21526)	D.H. Ames
£10	Agent Mrs. Collard
£50 (08884)	L. Lewis
£5	Agent Mr. Lock
£50 (36210)	H. Cummings
£5	Agent E. Oakley
£50 (26744)	D.M. Stinchcombe
£5	Agent D.M. Stinchcombe
£50 (17402)	Mrs. J. Clark
£5	Agent D. Hawes
£10 (26717)	D. Ford
£10 (19934)	N. Stephen
£10 (14200)	O.M. Treharne
£10 (05952)	C. Jones
£10 (34459)	Tom Raymond
£5 (03390)	Mrs. J. Chambers
£5 (03569)	Andrew Baldwin
£5 (39927)	Unclaimed
£5 (27874)	Unclaimed
£5 (13572)	D.R. Draper
£5 (34220)	A. Morgan
£5 (04239)	C. Matthews
£5 (02082)	A. Davies
£5 (01118)	J. Higgins
£5 (24097)	I. Bateman

CHECK YOUR TICKETS!

Weekly Lottery results published every Thursday in the *South Wales Argus* and *South Wales Echo*.

• Please Note: Any unclaimed prizes were at the time of going to press.



Stocks and service to depend on

MACREADY'S

GLYNWED STEEL STOCKHOLDING

NEWPORT: Town Dock, Newport, Gwent NPT 2TS
Telephone: 0633 52199

NEWPORT COUNTY PLAYER SPONSORSHIP '81/82

(Enquiries to the Commercial Department, Somerton Park, Tel.: 277472)

Player	Official Travel Attire £50	Training Kit £15	Track-Suit £15	Playing Kit £15	Boots £15
JOHN ALDRIDGE	Subscription Draw	Pat Mason of The Bread Basket and The Oven Door, Newport			
NEIL BAILEY	Mr. T. E. Swindley	Martin Greenham		Martin Greenham	
RAY BISHOP	Mr. T. E. Swindley	Wayne, Nick and Steve of Heol-y-Mwyn, Ebbw Vale			
GRANT DAVIES	Mr. T. E. Swindley	Cross Hands Manage't & Fans . . . John L., John P., Bert & Tony			
KARL ELSEY	Mr. T. E. Swindley	Office Cleaning Services of Cardiff			
HOWARD GODDARD	Mr. T. E. Swindley	Syd Jenkins		Syd Jenkins	
DAVE GWYTHYR	Mr. T. E. Swindley	J. C. Computer Systems Ltd.		J. C. Computer Systems Ltd.	
MARK KENDALL	Mr. T. E. Swindley	The Royal London Mutual Insurance Society Ltd.			
TERRY LEES	Mr. T. E. Swindley	A. O'Connor, W. Coulson, R. Morgan, J. Davies, K. Lloyd, N. Dudley, D. Pritchard, P. Sefton, D. Orphan, S. Orphan, P. Pritchard, J. Challingsworth, Miss H. Davies, C. Wilmott, P. Cox, K. Hall			
STEVE LOWNDES	Mr. T. E. Swindley	MAT Transport, Clydesmuir Rd. Ind. Estate, Tremorfa, Cardiff			
KEVIN MOORE	Mr. George Ford	Roy Enos		Roy Enos	
KEITH OAKES	Syd Jenkins	James Parry, Coal Merchants, Newport, Gwent			
JOHN RELISH	Mr. Jack Hyde	Mr. Jack Hyde		Mr. Jack Hyde	
TOMMY TYNAN	Ladbroke Mercury Hotel, Newport	Alban, Margaret, Andy Baldwin, Mel Lentie		Martin Smith and Peter Hayward	
NIGEL VAUGHAN	Mr. T. E. Swindley	Casacampo		Casacampo	
ALAN WADDLE	Ladbroke Mercury Hotel, Npt	Messrs. Derek Pugh Racing Services Ltd.			
RICHARD WALDEN	Mr. T. E. Swindley	Crow Valley Tyres Ltd., Autopia, Llantarnam Rd., Cwmbran			
JEFF JOHNSON	Mr. T. E. Swindley	Havwren Plant Hire Ltd.		M. & A. Roach Borderers Hotel, Npt.	
PAUL BODIN	Mr. Mike Perry			W. Bishop	



• Mr. C. EBDALE (left) was a recent £1,000 winner of our Weekly Lottery, and here he is receiving his cheque from Commercial Manager Dennis Smith at our home game with Burnley. (Pic. by Colin Dowd)

PLAYER OF THE YEAR DANCE

On Thursday, 20th May, 1982

at Tiffany's Newport (8.00 p.m. — 1.00 a.m.)

Tickets — £1.50 each — available from Commercial Department

(anyone ordering 10 tickets will receive one free)

1981 MITRE 1982 MATCH DONORS

- BRENTFORD — W. G. Coulson, A. E. O'Connor, R. D. Morgan, J. E. Davies, K. C. Lloyd, S. Wood
- BRISTOL CITY — South Wales Argus
- BRISTOL ROVERS — Harry Wheeler & Sons
- BURNLEY — Burnley Building Society
- CARLISLE — Syd Jenkins
- CHESTER — P. & K. Commercial Vehicle Services Ltd.
- CHESTERFIELD — The Newport Show
- DONCASTER — MAT Transport Ltd.
- EXETER — N. J. Dudley, D. S. Pritchard, P. Sefton, D. J. Orphan, S. T. Orphan, P. K. Pritchard
- FULHAM — D. & M. Oliver
- GILLINGHAM — Mr. T. E. Swindley
- GRIMSBY (Gr. Cup) — Mr. T. E. Swindley
- HUDDERSFIELD — Havwren Plant Hire Ltd.
- LINCOLN — Queens Hotel, Bridge St., Newport
- MILLWALL — Isotemp Ductwork Ltd.
- OLDHAM — Subscription Draw
- OXFORD — Luton Sports Press Ltd.
- PLYMOUTH — Steve Edmunds Toys & Games
- PORTSMOUTH — Havwren Plant Hire Ltd.
- PRESTON — Crow Valley Tyres Ltd.
- READING — Roy Enos
- SOUTHEND — Bob Staffarion
- SWINDON — Monmouthshire Building Society
- WALSALL — J. T. Challingsworth, Miss H. Davies, C. P. Wilmott, P. Cox, K. J. Hall
- WIMBLEDON — J. C. Computer Systems Ltd.
- TORQUAY (FLC) — Steve Edmunds Toys

Enquiries for ball sponsorships can be made at Commercial Office — Newport 277472.

LOOK BACK

THE summer of 1935 marked the end of an era for Newport County — Manager Jimmy Hindmarsh had resigned through ill-health after sixteen years with the Club, thirteen of them as manager. He had battled long and hard against our financial problems, but all his best players were inevitably transferred, and we had sought re-election twice in three years after our return to League football in 1932 following a season in the Southern League. Former England winger Louis Page was Hindmarsh's successor, new signings were made, and we began the '35/36 season against today's visitors Swindon Town with a new colour scheme (red and white stripes, with black shorts), and full of hope for the future.

Louis Page was a well-known name in Football. Born in Kirkdale, Lancashire, in 1899 he had played for South Liverpool, Stoke, Northampton, Burnley, Manchester United, Port Vale and had become player/manager at Yeovil in 1933. He had gained seven England Caps between 1926 and 1928, and on one occasion in April 1926 had played for the first time in his career as an emergency centre-forward for Burnley at Birmingham, scoring six goals in his side's 7-1 win!

His first signing at Somerton Park was in fact from Swindon Town — goalkeeper Arthur Briggs who had helped his team secure a 2-1 victory here in the final match of '34/35. And Page went back to his former club Burnley for a new trainer — Charlie Bates who had been at Turf Moor for 22 years. Nearly all our professionals had been released at the end of the previous season, and Louis Page was set the task of fielding a completely new side. In

addition to Briggs, he signed on another thirteen players. They were, in order of arrival, full-back Bob Calder (Bradford City) full-back Jimmy Kelso (Port Vale), half-back Tommy Helsby (Hull City), centre-half Jimmy Craven (Port Vale), inside-forward Frank White (Coventry City), inside-forward Alfie Clark (re-signed from Lovells Athletic) half-back Dai Jones (Tottenham), full-back Eddie Jenkins (Bristol City), inside-forward



• LOUIS PAGE
—Managed both Newport County
and Swindon Town

Bobby McKay (Bristol Rovers), centre-forward Jimmy Smith (Bristol Rovers), inside-forward Jack Parle (Yeovil), full-back Ron Hugh (re-signed from Lovells) and half-back Dudley Lewis (Exeter City).

Amongst that group were two former Scottish Internationals — Bobby McKay and Jimmy Smith. McKay had gained his one cap in 1928 against Wales when he was with Newcastle United, while Smith had appeared against England in 1924 as an Ayr United player. And it was with

Ayr in 1927/28 that Smith had scored 66 goals in 38 Scottish Second Division matches. In that same season Bill "Dixie" Dean of Everton had netted 60 First Division goals — an achievement which naturally overshadowed Smith's effort... but nevertheless both records are likely to stand for all time.

The start of that '35/36 season was eagerly anticipated by our followers — just 3,000 had seen the last match of the previous campaign, but on this occasion 11,161 were present for the game against a Swindon side managed by former Bolton and Wales outside-left, Ted Vizard. We included eight of our new signings along with three survivors from the old regime — left-half Jack Burgess inside-right Tommy Green and long-serving winger Billy Thomas. In seven League and F.A. Cup meetings since our 1932 return to the League, we had failed to beat Swindon, and this opening game under Louis Page was to be no exception despite the fact that for much of the game we faced only ten men, whilst at one stage we actually led 2-0! Tommy Green had given us a 25th-minute lead and Jimmy Smith had increased it after half-time. Immediately Swindon's Fowler had reduced the score, and they equalised through outside-right Peters just before time. So a disappointing start, but the 11,000 crowd and the local press thought that our new combination had distinct possibilities — they were all wrong because we finished last but one and had to seek re-election again!

As for Louis Page, he remained with us until September 1937 when he was replaced as Manager by Billy McCandless, and in December 1938 Page became trainer/coach to

IN AMBER

Glentoran in Northern Ireland. From July 1945 to May 1953 he was Manager of Swindon Town and for the next three years was in charge at Chester. He died aged 60 in October 1959, and will be remembered at Somerton Park for signing in the '36/37 period the basis of the team that McCandless took to promotion in '38/39, despite an 8-0 defeat by Swindon on Boxing Day of that season!

The two teams for the start of the '35/36 campaign were: —

NEWPORT CO: Briggs; Jenkins Kelso; Helsby, Craven, Burgess; Green, McKay, Smith, Parke, Thomas.

SWINDON TOWN: Rutherford; Duckworth, Smith; Horrocks, Armstrong, Willcockson; Peters Cochrane, Fowler, Lowry, Wells.



● Our playing-staff at the start of the '35/36 season ... **BACK** (from left) — Enoch Thomas (Asst. Trainer), Roy Hill, Jimmy Smith, Eddie Jenkins, Tommy Helsby, Howard Davies, Arthur Briggs, Len Williamson, Bob Calder, Dudley Lewis, Charlie Whitehouse, Jack Burgess, Mr. Donald Wright (Secretary). **FRONT** (from left) — Louis Page (Manager), Jimmy Kelso, Jim Saddler, Frank White, Tommy Green, Albert Derrick, Tommy Appleby, Bobby McKay (Capt.), Jack Parke, Dai Jones, Harry Morgan, Jimmy Craven, Charlie Bates (Trainer).

C. PIKE Ltd.

Telephone NEWPORT 274663

HAULAGE CONTRACTORS

BROADWAY FARM, NASH, NEWPORT

TIPPERS & FLATS AVAILABLE

THE CAVALIER

FOR GOOD ENGLISH FOOD
RESTAURANT & BAR : CAFE

Open for Breakfast/Lunch/Dinner
from 8.00 am to 2.00 am

e.g. Businessman's Lunch 11.30 am—3.15 pm
STARTING SOON — FANCY DRESS EVENING
WITH LIVE ENTERTAINMENT. The restaurant
is available for Functions, Weddings, etc.
(seating for 50)

111 CHEPSTOW ROAD, MAINDEE
NEWPORT Tel: 214208

The Stonehouse

LIGHTHOUSE ROAD
NEWPORT Tel. 65823

2 Lounges Steak Bar

Bar Meals & Lunches every DAY & NIGHT

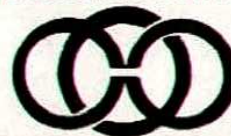
Wedding Receptions Small Parties

Bring a little sunshine into your life
by booking your next holiday in the sun with....

HOGG ROBINSON TRAVEL

80/81 BRIDGE STREET, NEWPORT,
GWENT,
NPT 4AQ

TEL. NEWPORT (0633) 214321/6



ONE of the most vital jobs at any League club is that of seeking young talent good enough to develop into future first-team material and our Manager, Colin Addison, has taken a major step in this direction by persuading **GRAHAM REYNOLDS**, a well-known name in that area, to re-join Newport County after a six-year absence during which time Graham has been connected with our neighbours, Cardiff City.

Newport-born Graham left Somerton in April 1976 on what he described as "a matter of principle" following the termination of the contract of Dave Elliott, who was then manager. Three months later Jimmy Andrews asked him to join Cardiff City and his success at youth-level at Ninian Park is well enough known. Of his discoveries, four were in the Cardiff line-up last Saturday -- Andrew Dibble, Linden Jones, Paul Maddy and Tarci Micallef, while Alan Sanders is on the fringe of the first team. And he hadn't done too badly in his spell at Somerton Park with players such as Mark Aizlewood, Steve Lowndes, Nigel Vaughan, Mike Powell, Mike Dowler, Mike Hancock, Paul Preece and Graham Rogers.

The Reynolds connection with Newport County goes back some twenty-six years to the days when he was an eighteen year-old sixth-former at St. Julian's High School. An outstanding all-round sportsman, he made his League debut at centre-forward in October 1956 at Bournemouth, scoring on his first appearance. He then went to St. Luke's College, Exeter, where he trained as a teacher and during that period played as an amateur for Plymouth Argyle. On leaving

College he returned to Newport and took up a teaching post at Hartridge Comprehensive School, where he has now been working for the past twenty-two years.

His reasons for leaving Cardiff City have already been revealed in the Press, and while he doesn't want to repeat them in this interview he admits that he's disappointed to be leaving Ninian Park though he adds: "That is more than made up for by the new challenge I'm facing at Somerton. I could have gone to a number of First Division Clubs, but Newport County are



my local side and after leaving Cardiff I didn't want to join any other club except them. I'm delighted to say that Bill Lucas will be taking an active part helping me out, and by this week some of my other contacts will probably have joined me."

Colin Addison has appointed Graham as the Club's Youth Development Officer and our latest arrival has already been hard at work through his many contacts, setting up youth-training schedules which begin next August on a weekly basis

at Cwmbran Sports Centre. Graham follows up all youngsters recommended to him and invites the most promising to his sessions. . . . "I like to think that people know me by reputation and that they get a fair deal from me. Youngsters whom I deal with know exactly where they stand and we don't make false promises to them about their futures. Of course, the hardest part of the job is telling people that you don't think they're up to standard."

Clearly, the most satisfying part of Graham's task is when one of his protégées makes the grade at first-team level, and he likes to think that if he does recommend a boy to be taken on as an apprentice at sixteen years of age, then that youngster is going to make it. It's a process that requires patience, however, because he keeps an eye on promising youngsters from the age of thirteen. And already a number of players of that age who are not yet attached to any League clubs on schoolboy forms have indicated that they'll be accepting Graham's invitation to attend his Cwmbran training sessions next season. Graham doesn't often see first-team matches -- his weekends are taken up watching recommended youngsters, but he already knows our first-team squad -- "We usually meet in The Wayfarers Café on Chepstow Road during the lunch-hours, and I know that a number of them are already involved in coaching youngsters. So I'm looking forward to working with them in that side of the game because it's very encouraging for promising schoolboys when an established first-team player shows that he's prepared to help in that way."

ANGLE

• GRAHAM REYNOLDS (left) seen here with one of his "discoveries" — Nigel Vaughan. (Pic. by Colin Dowd)



For those who demand
ONLY THE BEST . . .

John B. Davies

Mahogany and Oak
Double-Glazed
Window Replacements



Showrooms at

**1 BLEWITT STREET
NEWPORT**

Tel.: 213595

It's Just Like...³³

**Home
Cooking**



**Wayfarer's
Cafes Ltd.**

**Chepstow Road,
Newport Tel: 273089**

Contact **Geoff Godsall**

at

Sign of the Times

for the very best in all
types of signwriting.
(As seen at Somerton Park)

Tel: 0432 58113

KICK OFF
ON THE RIGHT LINES

Consult....

GEORGE FORD & SONS

Old Copper Warehouse,
Crawford Street, Newport.
Telephone Newport 59966

for all your motor spares
and accessories



GWENT CAR HIRE

SELF-DRIVE CARS, VANS,
& MINI-BUSES

(New Model Fords & other makes)

18 CLARENCE PLACE,
NEWPORT, GWENT
Phone 65643/55004

also at

Chepstow 5251 & Caldicot 91-421626

EDWARDS

SPORTS HOUSE

Newport Cardiff
Pontypridd Swansea
Bristol Cwmbran



For the Best in
Sports Equipment
Clothing and Footwear



ACORN BUSINESS SYSTEMS

Suppliers of the best selling
APPLE Microcomputer
Accounting; Stock Control,
Payroll, Mailing, etc.;
Remember it's ACORN
for APPLE

Acorn Business Systems,
Unit 87 Springvale Estate,
Cwmbran, Gwent. NP44 5BH
Tel.: (063 33) 72429

NEWPORT SALVAGE

DEMOLITION
AND
DISMANTLING

ALL FORMS OF
DEMOLITION SALVAGE
AND SITE CLEARANCE

TIMBER RECLAMATION

ALL SIZES AND QUANTITIES
OF TIMBER BOUGHT AND SOLD.
NEW AND SECONDHAND

NEWPORT 214820

BARNBROOKS

Plumbers
Merchants

FOR ALL YOUR BATHROOM,
SHOWER and HEATING
EQUIPMENT CONTACT

THE HEATING, PLUMBING
and SHOWER CENTRE

77/78 LOWER DOCK STREET
NEWPORT.

TEL: NEWPORT 54426

DIVISION THREE '81/82

(Including last weekend's games)

Win - 3 points; Draw - 1 point

Team	P	W	D	L	F-A	Pts
1 Burnley	45	21	16	8	65-44	79
2 Fulham	45	21	14	10	76-50	77
3 Carlisle Utd.	45	22	11	12	64-50	77
4 Lincoln City	45	21	13	11	65-39	76
5 Oxford Utd.	46	19	14	13	63-49	71
6 Southend Utd.	46	18	15	13	63-51	69
7 Brentford	46	19	11	16	56-47	68
8 Gillingham	45	19	11	15	62-55	68
9 Millwall	45	18	12	15	60-60	66
10 Plymouth A.	46	18	11	17	64-56	65
11 Chesterfield	45	18	9	18	56-57	63
12 Reading	45	17	11	17	66-73	62
13 Preston N.E.	46	16	13	17	50-56	61
14 Bristol R.*	46	18	9	19	58-65	61
15 Portsmouth	44	14	18	12	52-46	60
16 Huddersfield	46	15	12	19	64-59	57
17 Exeter City	46	16	9	21	71-84	57
18 Newport Co.	45	13	16	16	53-54	55
19 Doncaster R.	45	13	16	16	53-66	55
20 Walsall	46	13	14	19	51-55	53

21 Swindon T.	45	13	13	19	55-70	52
22 Wimbledon	45	13	11	21	58-73	50
23 Bristol City	45	11	12	22	38-63	45
24 Chester	45	7	11	27	36-77	32

*Two points deducted for fielding
ineligible player

PLAYERS' ROSTER '81/82

(Including last Saturday's match)

	APPS.		GOALS	
	Lge.	Cup	Lge.	Cup
J. ALDRIDGE	31(4)	3	11	1
N. BAILEY	17	11	—	—
R. BISHOP	5(6)	1(2)	2	1
G. DAVIES	40	10(1)	—	—
K. ELSEY	39	10(1)	7	—
H. GODDARD*	4	4	1	—
D. GWYTHYR	20(6)	7(2)	3	1
J. JOHNSON	33	5	2	—
M. KENDALL	45	11	—	—
T. LEES	25	5(1)	—	1†
S. LOWNDES	27(3)	5(1)	3	—
K. MOORE	28(1)	5	2	1
K. OAKES	44	11	1	3
J. RELISH	27	7	—	—
R. THOMAS	3	—	—	—
T. TYNAN	31(6)	6(2)	12(4†)	3
N. VAUGHAN	43	10(1)	3	—
A. WADDLE*	13(7)	5(1)	4	—
R. WALDEN	22	5(1)	—	—
Opponents			2	—

Maximum—45 League, 11 Cup †Penalty
*No longer with Club



• STEVE LOWNDES
—his match-winner against
Huddersfield on Saturday confirmed
our Third Division safety

When? Where? Who?

Key — Home Matches in CAPITALS
 * = player withdrawn
 † = non-playing substitute

1981	Opponents	1982	F.A.	Scores	Att.
14 Aug (Fri)	WOLVERHAMPTON W. (Friendly)		2-3	Wadde 2	2,430
15 Aug (Sat)	TORQUAY UNITED (Group Cup)		0-0	Tynan, Lees (pen.)	2,480
18 Aug (Tue)	PLYMOUTH A. (Group Cup)		2-1		2,316
22 Aug (Sat)	AFC Bourmouthe (Group Cup)		0-0		2,511
29 Aug (Sat)	CHESTERFIELD		1-0	Johnson	5,079
2 Sep (Wed)	Torquay United (F.L.G.L.)		3-2	Aldridge, Oakes, Moore	2,514
4 Sep (Fri)	Southern United		4-0	Aldridge, Gwyther, Tynan, Eley	4,620
12 Sep (Tue)	OXFORD UNITED		3-2	Aldridge, Wadde 2	5,293
15 Sep (Tue)	TORQUAY UNITED (F.L.C.I.)		0-0		7,522
19 Sep (Sat)	Bristol City		1-2	Aldridge	4,542
23 Sep (Wed)	Reading		1-2	Anderson (o.g.)	5,064
26 Sep (Sat)	PRESTON NORTH END		1-1		4,028
29 Sep (Tue)	BRENTFORD		0-1	Tynan 2	3,351
3 Oct (Sat)	Lincoln City		2-2		5,507
6 Oct (Tue)	Oldham Athletic (F.L.C.2)		0-1		4,979
10 Oct (Sat)	DONCASTER ROVERS		1-0	Gwyther	3,988
17 Oct (Sat)	Fulham		1-3	Tynan	4,609
20 Oct (Tue)	MILLWALL		1-1	Goddard	8,787
24 Oct (Sat)	Portsmouth		0-0		4,578
27 Oct (Tue)	OLDHAM ATHLETIC (F.L.C.2)		0-0	Eley 2	3,972
31 Oct (Sat)	CARLISLE UNITED		2-3		6,464
3 Nov (Tue)	Bristol Rovers		0-2	Oakes	4,166
7 Nov (Sat)	Walsall		1-3		4,428
14 Nov (Sat)	PLYMOUTH ARGYLE		0-1		3,535
21 Nov (Sat)	Colchester Utd. (F.A.C. 1)		0-2		4,149
28 Nov (Sat)	EXETER CITY		1-1	Wadde 1	1,369
1 Dec (Tue)	TAFF'S WELL (W.C.3)		5-0	Gwyther, Oakes, Tynan 2, Bishop	2,056
5 Dec (Sat)	Wimbledon		3-2	Tynan, Eley, Wadde	2,206
8 Dec (Tue)	GRIMSBY T. (Group Cup % Final)		0-2	Oakes	3,916
15 Dec (Tue)	Cardiff City (W.C.4)		0-2		500
22 Dec (Tue)	WOLVERHAMPTON W. (Friendly)		2-3	Aldridge 2	4,901
26 Dec (Sat)	CHESTER		0-1	Moore	6,035
28 Dec (Mon)	Gillingham		1-1		
2 Jan (Sat)	READING		3-1	Aldridge 2, Lowndes	2,948
16 Jan (Sat)	Burnley		1-2	Moore	4,716
23 Jan (Sat)	Cherfield		0-1		4,236
30 Jan (Sat)	BRISTOL CITY		1-1	Vaughan	5,927
6 Feb (Sat)	Oxford United		1-1	Tynan (pen.)	5,653
13 Feb (Sat)	LINCOLN CITY		0-0		3,735
20 Feb (Sat)	Brentford		0-2		4,297
27 Feb (Sat)	Doncaster Rovers		2-0	Bishop, Aldridge	4,190
2 Mar (Tue)	MAN. CITY (Len Ashurst's Test†)		1-0	Tynan	3,857
7 Mar (Sat)	FULHAM		1-3	Lowndes	5,178
9 Mar (Tue)	Millwall		0-1		3,084
13 Mar (Sat)	PORTSMOUTH		1-1	Eley	4,209
16 Mar (Tue)	BRISTOL ROVERS		2-2	Tynan (pen.)	5,312
20 Mar (Sat)	Carlisle United		1-1	Aldridge, Tynan	4,042
27 Mar (Sat)	WALSALL		2-2	Sarella (o.g.), Tynan	3,484
30 Mar (Tue)	Huddersfield Town		0-2		4,205
2 Apr (Fri)	Plymouth Argyle		2-1	Eley, Bishop	5,148
10 Apr (Mon)	GILLINGHAM		4-2		1,451
12 Apr (Wed)	WIMBLEDON		0-0	Tynan (pen), Vaughan, Johnson, Gwyther	4,353
17 Apr (Sat)	Exeter City		0-0		3,900
24 Apr (Sat)	BURNLEY		1-2		3,168
1 May (Tue)	Preston North End		0-0		4,024
4 May (Sat)	Swindon Town		1-2	Vaughan	4,972
11 May (Tue)	SOUTHEND UNITED		3-1	Aldridge	5,576
15 May (Sat)	HUDDERSFIELD TOWN		1-0	Tynan 2 (1 pen.), Eley	3,716
18 May (Tue)	SWINDON TOWN		1-0	Lowndes	4,169

HERE NEXT . . . 1982/83

☆ LINE UP ☆

NEWPORT COUNTY h.t. f.t.
 ()

Shirts - Amber with Black Trim
 Shorts - Black with Amber Trim

- 1-Mark KENDALL
- 2-Terry LEES
- 3-John RELISH
- 4-Grant DAVIES
- 5-Keith OAKES (Capt.)
- 6-Jeff JOHNSON
- 7-Nigel VAUGHAN
- 8-Steve LOWNDES
- 9-Tommy TYNAN
- 10-John ALDRIDGE
- 11-Karl ELSEY
- 12-Ray BISHOP

SWINDON TOWN h.t. f.t.
 ()

Shirts - Red with White Trim
 Shorts - White

- 1-Jimmy ALLAN
- 2-Charlie HENRY
- 3-Kevin BADDELEY
- 4-Gary EMMANUEL
- 5-Russell LEWIS
- 6-Kenny STROUD
- 7-Gary WILLIAMS
- 8-Roy CARTER (Capt.)
- 9-Paul RIDEOUT
- 10-Andy ROWLAND
- 11-Mike GRAHAM
- 12-

Match Attendance:

MATCH OFFICIALS

Tonight's Referee is **JOHN HUNTING** of Leicester who began officiating while in the Forces overseas and he's been on the League List for fourteen years. Married, with three children, he is a Lecturer in P.E. at Leicester Polytechnic.

LINESMEN:

- A. V. STONE (Bristol) - Red Flag
- K. W. DEANE (Rhondda) - Yellow Flag



THE MONMOUTHSHIRE BUILDING SOCIETY

**...LATE NEWS...
 ...ALSO ON
 NEWPORT BENCH
 ...I.G. LINTELS...
 WORLD CLASS
 BUY...QUICK...
 BEAUTIFULLY
 BUILT...VERY
 VERY STRONG...**



Get the built-in strength of steel.

I.G. Lintels Ltd,
 Avondale Road Cwmbran Gwent NP44 1XY
 Tel: Cwmbran (06333) 68211/66811